

Het Pakt

Music Campsites

Camping and music. Two totally different things. We bring them together.

The music is made by a 'fictitious' fanfare. Each band member is life-size printed on photo paper. The whole band is temporarily housed in special transparent igloos. Every musician has his own tent. Each tent will have its own sound depending on the instrument used. The musicians are thus protected from the weather. They bring a festive song called "Suzanna". This number is the start for a series of self-created songs, all are being performed by the fictitious band members. The visitor walks through a real-sounding fanfare where the individual sound of each instrument merges into a real marching band performance.



The arrangement of the tents varies depending on the **form** and **content**.

- **Hopper** is in the form of a city campsite. This installation is built up in the height, such as a block of flats. This campsite is spread over several floors in a pyramid shape.



- **Surround** is a version of the campsite in a double circle.



- **Hullabaloo in the oasis** is the total artistic version of our camping facilities.



- **El Sol-leie** is a floating campsite. A river, a pond with no current is ideal to build this installation.



- **El Sol** is the rural version of our campsites.

El Sol is the rural version of our campsites.

This installation takes the form of a sol key on a grassy plain.

This festive installation exists from about thirty transparent tents which accommodates each the huge image (picture) of a musician. Out of each tent the instruments of this specific musician sounds.

Wandering around through the installation one can discover all the different instruments separately by leaning over to each tent. All tents set together produces the sound of a whole brass-band. The fanfare is performing a special recorded festive composition "Susanna and Orchidea" from the composers Nino Giuffre and Roberto Villata.

The royal Music Brass band of the village of Aarsele (Belgium) is performing and acting in this installation.

The tents stand established in the form of "Sol Key". You need an elevated point or a birds eye to discover the form. In one of the tents we build a model of the location with our installation on scale. The visitor gets a true camping experience that is uplifted by the music. But especially the idea that they walk through the shape of a "Sol key" and this can only be viewed from above is a thrilling thought.

El Sol – Harelbeke 2012



Places of presentation,

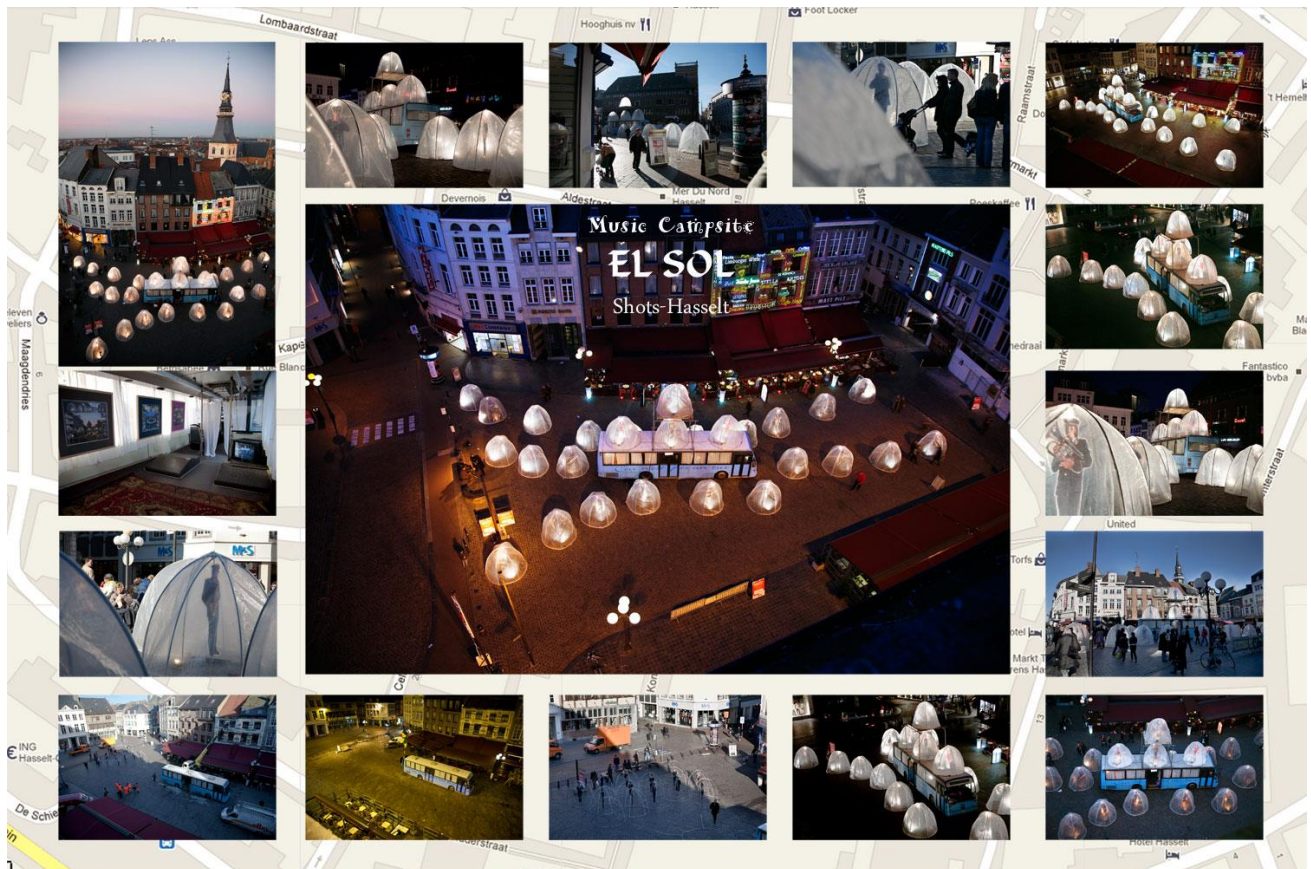
EL SOL

May 2006 - El Sol Creation
Cultureel Centrum Hasselt - Kermt Hasselt



El Sol Adaption– February 2008

At the central market place in Hasselt during the art festival SHOTS



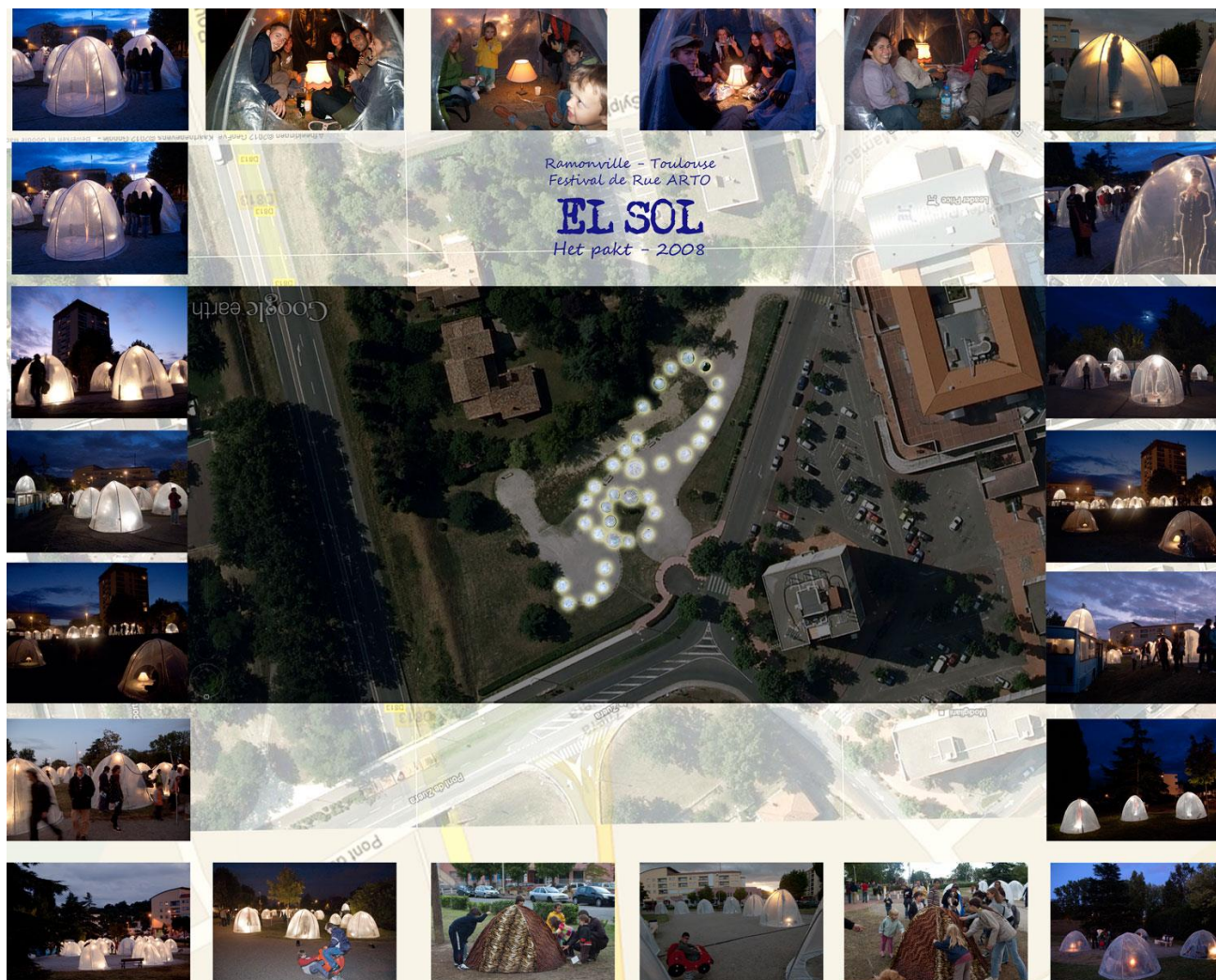
El Sol – July 2008

At the festival Excentrique - Chaumont sur loire / France



El Sol – September 2008

At the festival de rue “ARTO” Ramonville- Toulouse/France



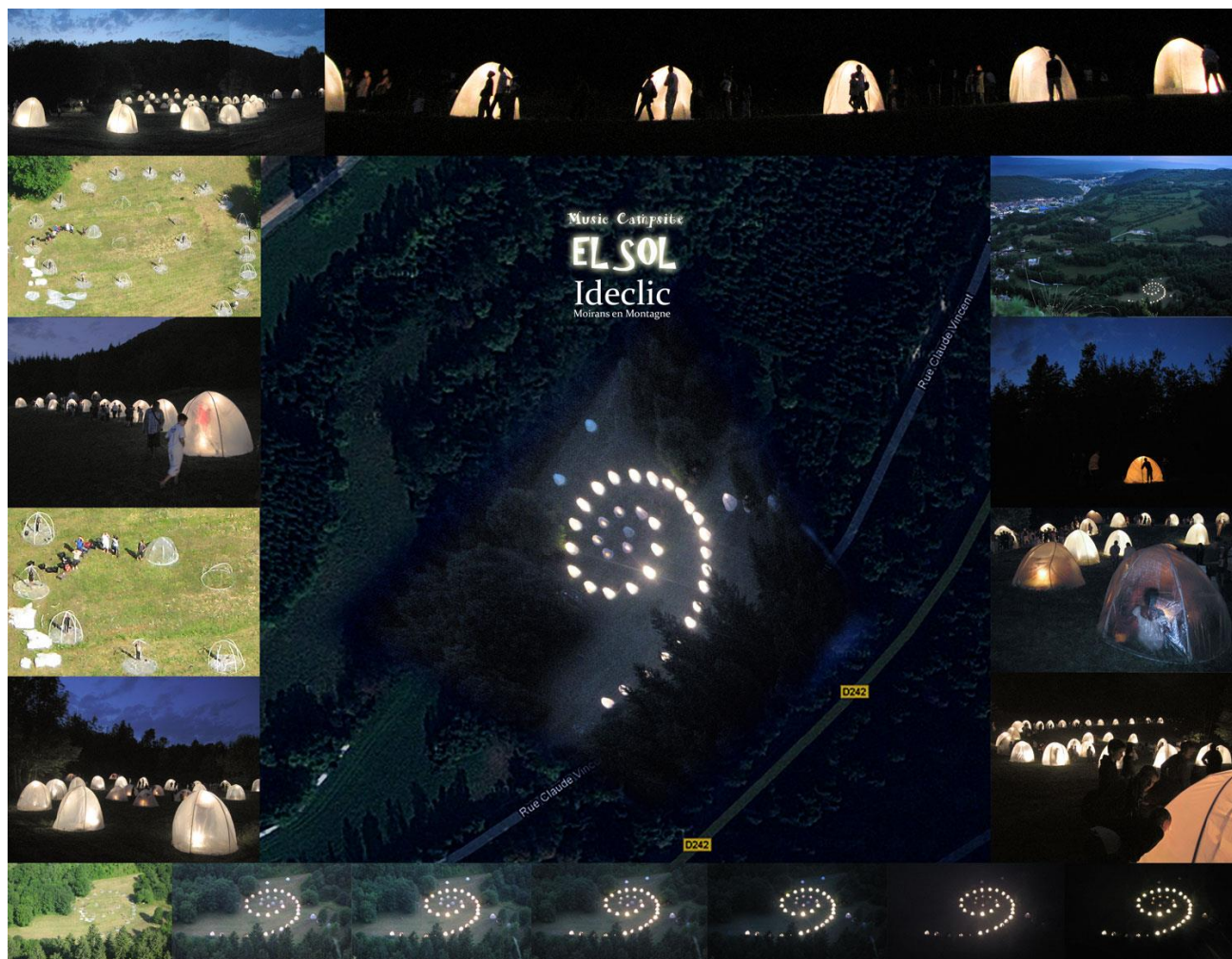
El Sol – October 2008

At the Festival Musique des Rues – Besançon/ France



El Sol – July 2009

At the Festival IDECLIC - Moirains en montagne/ France



El Sol – August 2011

LIGHT Festival skyway – Torun/ Poland



El Sol – September 2011

Chartres en lumière - Chartres / France

